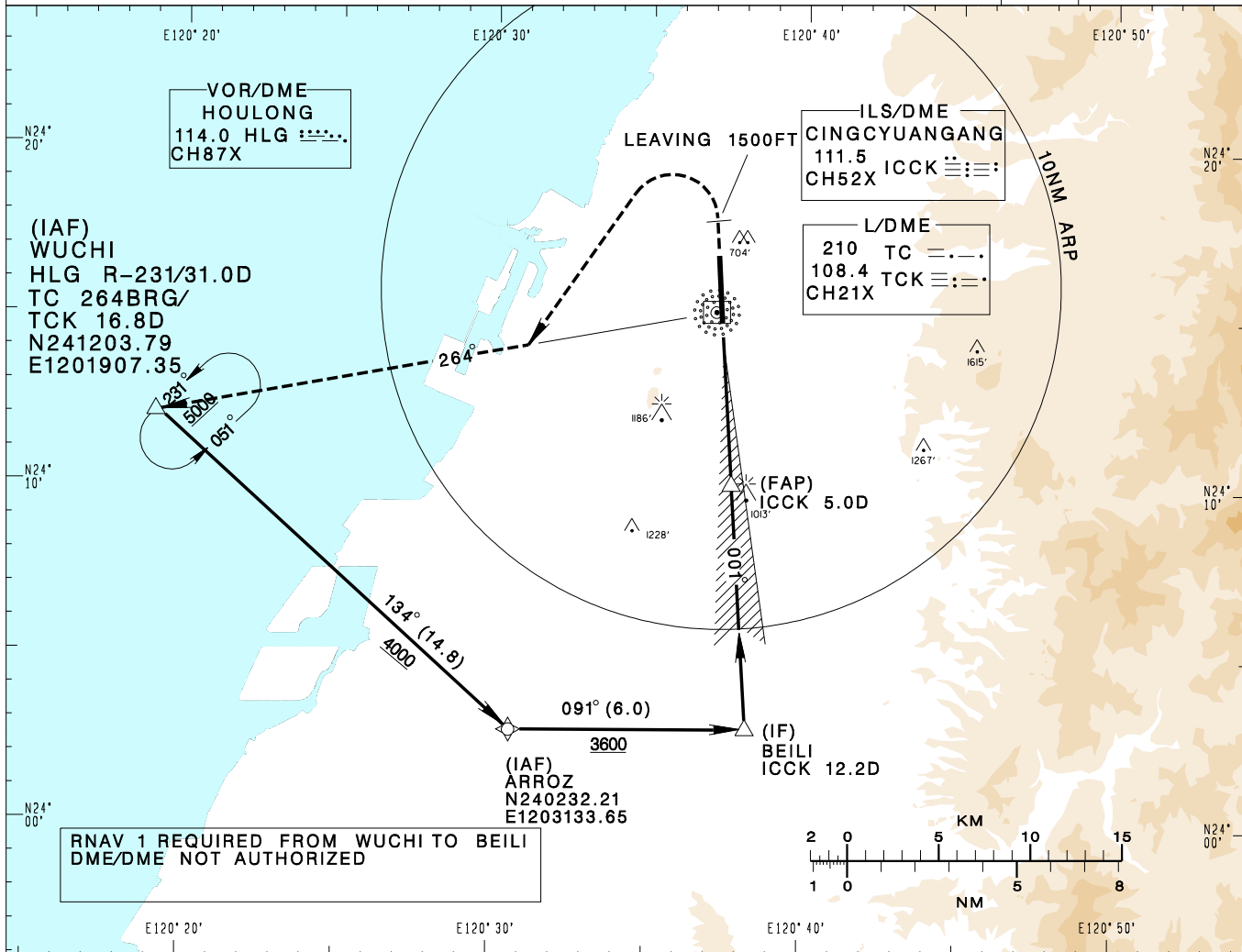


**臺中/清泉崗機場**  
TAICHUNG/CINGCYUANGANG AD

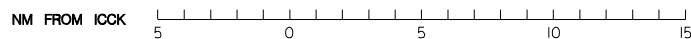
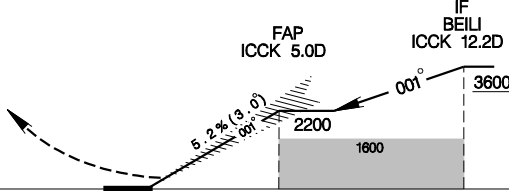
RCMQ  
ILS Y RWY36

TAIPEI APP 130.1 129.6	TAICHUNG TWR 118.75 120.25	ATIS 127.75	 VAR 5°W-2022 MSA ARP 25NM		
Apt Elev: 665'		Rwy36 THR Elev: 663'		Trans Level: FL130	Trans Alt: 11,000'
BEARINGS ARE MAGNETIC; DISTANCES ARE NAUTICAL MILES; ELEVATIONS, HEIGHTS IN FEET					



MISSED APCH:  
CLIMB RWY HDG TO 1500FT,  
TURN LEFT TO TRACK  
TC 264BRG TO WUCHI;  
CLIMB TO 5000FT AND HOLD.

GP 3.0°  
RDH 54



MINIMA (OCA IN FT, VIS IN M, OCH IN FT)

CATEGORY	A	B	C	D
STRAIGHT IN	863/RVR <sup>800</sup> 750 200	863/RVR <sup>800</sup> 750 200	863/RVR <sup>800</sup> 750 200	863/RVR <sup>800</sup> 750 200
STRAIGHT IN <sup>⊕</sup>	863/RVR 550 200	863/RVR 550 200	863/RVR 550 200	863/RVR 550 200
STRAIGHT IN (ALS OUT)	863/RVR <sup>1200</sup> 1200 200	863/RVR <sup>1200</sup> 1200 200	863/RVR <sup>1200</sup> 1200 200	863/RVR <sup>1200</sup> 1200 200
CIRCLING	1360/1900 695	1360/2800 695	1600/4400 935	1600/4800 935

NOTE  
1. CIRCLING NOT AUTHORIZED EAST OF RWY.  
2. <sup>⊕</sup>: APPROACH IS FLOWN USING A FLIGHT DIRECTOR, HUD OR COUPLED TO AN AUTOPILOT.

\*DME REQUIRED.

CHANGES: NEW PROC